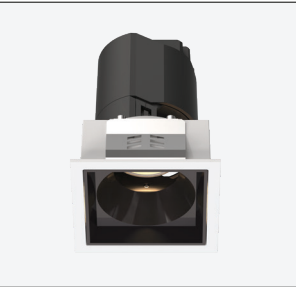


RECESSED DOWNLIGHTS

NEBULA SQ



Description:

Nebula SQ LED downlights are ideal ceiling-mounted fixtures that provide bright, energy-efficient illumination. They are designed to meet all your indoor lighting needs, they feature long lifespan and high performance, making them the perfect choice for homes and offices.

Category:
Indoor

Product Type:
Downlight

Mounting Type:
Recessed



Specifications:

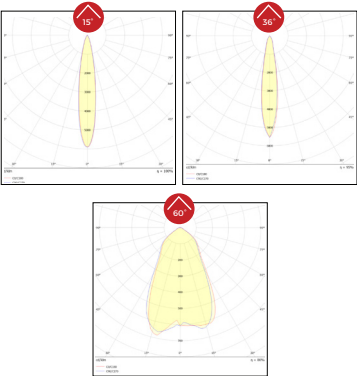
| Wattage | Lumen | Efficacy | Power Factor | CRI | CCT | Voltage | Frequency | Dimensions (mm) | | | | |
|---------|--------|----------|--------------|------|------------|-------------|-----------|-----------------|-----|---------|-----|-----|
| | | | | | | | | L | W | Cut-out | H | |
| 6W | 540lm | 90lm/w | >0.95 | ≥ 80 | 2700-5700K | 220-240 VAC | 50/60 Hz | 64 | 64 | 55x55 | 88 | 93 |
| 10W | 900lm | 90lm/w | >0.95 | ≥ 80 | 2700-5700K | 220-240 VAC | 50/60 Hz | 85 | 85 | 75x75 | 112 | 121 |
| 14W | 1260lm | 90lm/w | >0.95 | ≥ 80 | 2700-5700K | 220-240 VAC | 50/60 Hz | 85 | 85 | 75x75 | 112 | 121 |
| 20W | 1800lm | 90lm/w | >0.95 | ≥ 80 | 2700-5700K | 220-240 VAC | 50/60 Hz | 105 | 105 | 95x95 | 138 | 146 |

*Available in other CCTs on request.
*Available in CRI 90 on request.
*Above values are based on SEI calibrated machines testing on the white matt reflector.

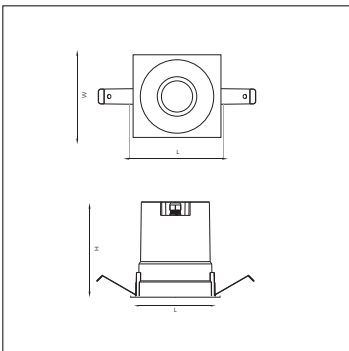
Features:

| Body Material | Finishing | Optics | Driver | Driver Mounting | Beam Angle |
|-------------------|------------------------|-----------------------------------|----------|---------------------|----------------|
| Die-Cast Aluminum | Electrostatic Painting | PMMA Lens with Outer PC Reflector | Included | Separated - Outside | 15°, 36° & 60° |

Photometric:



General Dimensions:



Reflector Finish:



Applications:

